

LIVE@ A HOME AWAY FROM HOME

Need a temporary place to call home? Mantra Hotels offers the comforts of home with long stay accommodation solutions, conveniently located across Australia.

At our Live@ properties, you will enjoy the following benefits:

- Stylish fully furnished apartments with a weekly housekeeping service.
- Competitive rates for stays more than 14 nights, with no need for full prepayment, no event surcharges and a flexible cancellation policy.
- 1GB of complimentary internet per day to ensure you remain connected.
- If you're with us for a month or more, we'll provide you with a welcome pack of groceries.

With Live@Plus, you will receive the additional benefits:

- For properties with on-site dining, a welcome breakfast will be provided after your first night's stay.
- As a resident, you'll receive a 10% discount on food and beverage from the hotel's dining facility.
- Live like a local in your new community with a list of local secrets to explore.



FV by Peppers
Brisbane, QLD

From **\$899*** per week
in a One Bedroom Apartment

FV by Peppers is located in the heart of one of Brisbane's most cosmopolitan entertainment precincts, Fortitude Valley. Featuring luxe amenities, such as a heated skyline pool, gym and tropical outdoor lounge area.



Mantra on Hay
Perth, WA

From **\$945*** per week
in a One Bedroom Apartment

Conveniently located in East Perth, Mantra on Hay offers spacious and well-appointed accommodation within easy reach of premier shopping, dining and entertainment.



Mantra on Frome
Adelaide, SA

From **\$875*** per week
in a One Bedroom Apartment

Mantra on Frome's self-contained One, Two and Three Bedroom Apartments are comfortable and spacious with contemporary décor throughout.



Mantra Chatswood
Sydney, NSW

From **\$1,015*** per week
in a One Bedroom Apartment, including a \$100 food and beverage credit at Melting Pot restaurant*.

Located in the thriving business and shopping district of Chatswood just 10 kilometres north of Sydney's CBD, Mantra Chatswood Hotel is the ideal base for leisure stays and business trips.



Live@

Mantra 100 Exhibition Melbourne, VIC

From **\$1,159*** per week
in a One Bedroom Apartment, including a \$100 dining and mini bar voucher*.

Located just a short walk to some of Melbourne's most iconic landmarks, fashion scene and café culture, Mantra 100 Exhibition offers spacious apartments with city views.

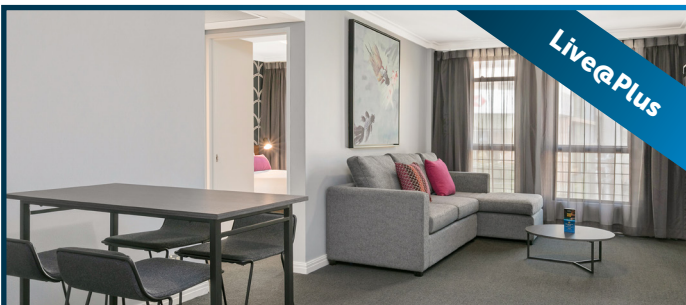


Live@Plus

Mantra Circle on Cavill Surfers Paradise, QLD

From **\$899*** per week
in a One Bedroom City View Apartment

Mantra Circle on Cavill offers One, Two and Three Bedroom Apartments, with stunning views of either the ocean stretching from Stradbroke Island to Burleigh Heads or the Gold Coast hinterland to the west.

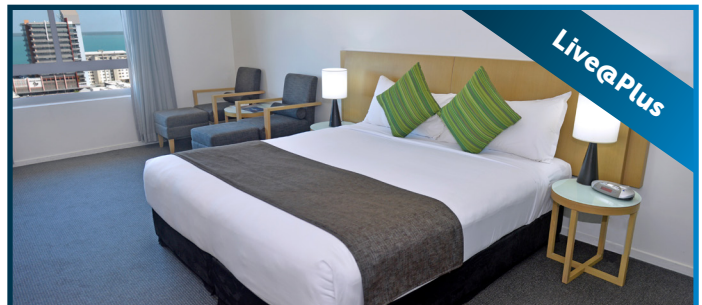


Live@Plus

BreakFree on George Sydney, NSW

From **\$1,253*** per week
in a One Bedroom Apartment, including unlimited WiFi*.

With refurbished rooms and close proximity to restaurants and shopping, Breakfree on George offers affordable central accommodation in marvellous Sydney.



Live@Plus

Mantra Pandanas Darwin City, NT

From **\$966*** per week
in a One Bedroom Apartment

Mantra Pandanas offers luxurious accommodation with a multitude of hotel facilities. Located in Darwin's CBD with easy access to the city's thriving hub of tourism, dining and shopping.



Live@Plus

Shadow Play by Peppers Melbourne, VIC

From **\$1,190*** per week
in a One Bedroom Apartment, including \$50 delivery credit from Edwin wine bar, wine tasting and self drive wine tour itinerary and Frank Green reusable coffee cup*.

Echoing Melbourne's sophistication, Shadow Play by Peppers is in a class of its own, presenting contemporary accommodation 1km from the central business district.

To book, call 1800 268 235 or email live@mantragroup.com.au



Art Series

PEPPERS

mantra

BreakFree

*Terms and conditions apply. Rates advertised are based on a weekly stay for a minimum duration of 28 consecutive nights. Valid for new bookings only, from 01 April to 30 June 2019. Rates are indicative only and subject to availability. Block-out dates may apply. Rates are commissionable at 10%. Not valid for conference or group business. All rates include complimentary internet (1GB data limit per day), weekly service at a minimum and a welcome grocery pack is available on any 28+ night stay. Live@Plus properties with on-site dining provide a welcome breakfast for 28 night stays. Live@Plus guests will also receive a 10% discount on food and beverage outlets where applicable. A cancellation fee of two night's accommodation will apply to any booking cancelled within 72 hours of check in time at the applicable best available rate. Dining is only available at specified locations where a chargeback arrangement has been established. Please see website for full terms and conditions.